

Town of Ellington

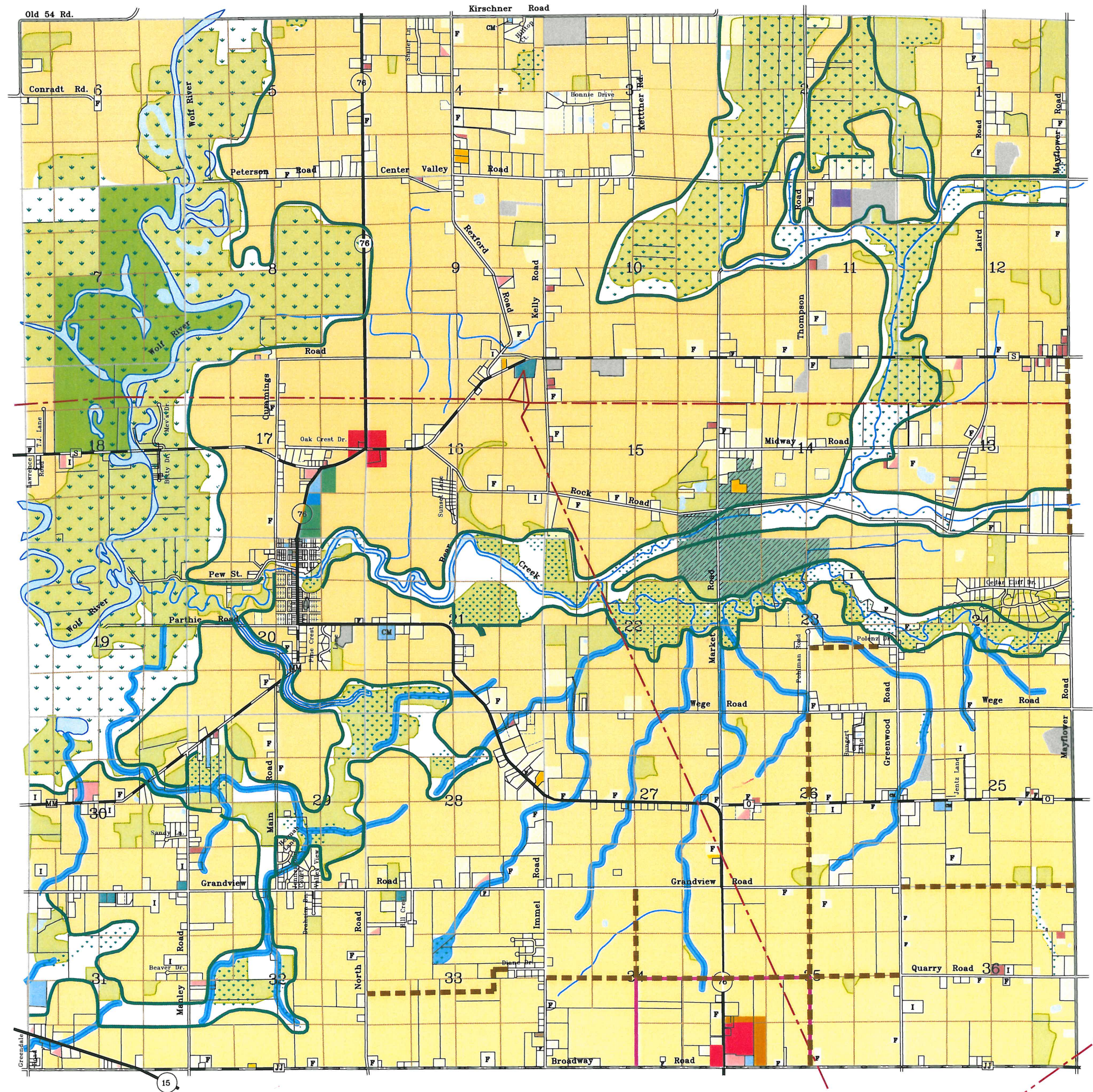
Future Land Use Plan

2004 - 2023



Legend

Existing	Future	
		Agricultural and Future Single Family Residential
		Two Family Residential
		Multi Family Residential
		Mobile Homes
		Commercial
		Industrial
		Transportation, Utilities and Communications
		Public, Government Facilities, Schools and Cemeteries (CM)
		Parks and Recreational
		Golf Course
		Quarries, Gravel, Sand Pits
		State Lands
		Woodlands
		Ponds, Surface Water
		Conservancy
		Transmission Lines
		Wildlife Corridor
		Planning Area Boundary
		Proposed Future Roads



This map was prepared by the Outagamie County Real Property Listing and Planning Departments. While intended to be as accurate as possible the map accuracy is limited by the quality of the public documents from which it was prepared. No warranty is made, and this map shall not be used as a substitute for an accurate field survey.



Martenson & Eisele, Inc.

Planning - Surveying - Engineering - Architecture

www.martenson-eisele.com

info@martenson-eisele.com

pnac156930cp_08-24-04