

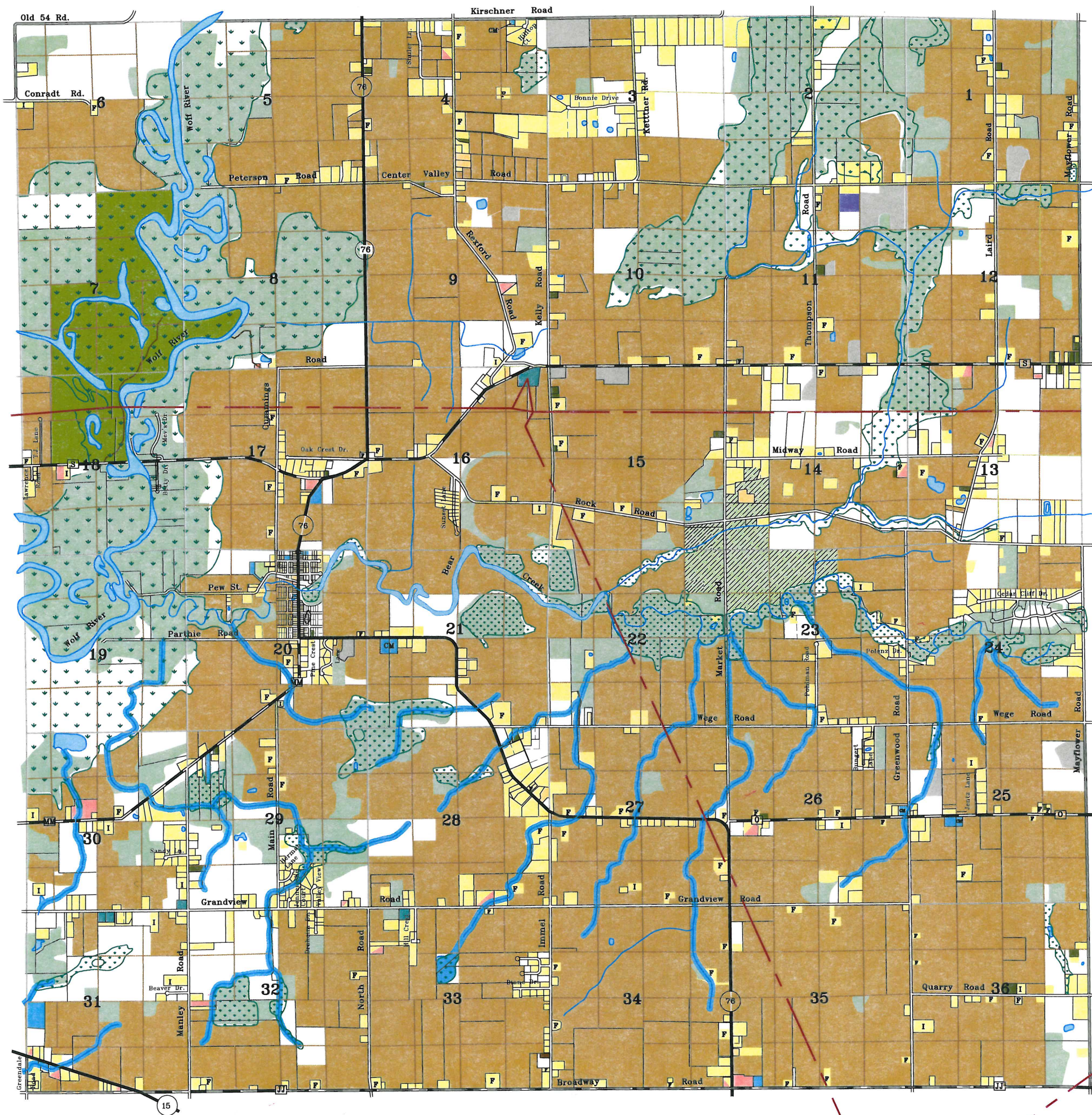
Town of Ellington

Existing Land Use Map



Legend

- Single Family Residential
- F = Active Farming
- I = Inactive Farm
- Two Family Residential
- Multi-Family Residential
- Mobile Homes
- Commercial
- Industrial
- Transportation, Utilities and Communications
- Public, Government Facilities, Schools and Cemeteries (CM)
- Parks and Recreation
- Quarries, Gravel, Sand Pits
- Agriculture and Farmland
- Golf Course
- State Lands
- Woodlands
- Ponds, Surface Water
- Conservancy
- Vacant and Undeveloped
- Transmission Lines



This map was prepared by the Outagamie County Real Property Listing and Planning Departments. While intended to be as accurate as possible the map accuracy is limited by the quality of the public documents from which it was prepared. No warranty is made, and this map shall not be used as a substitute for an accurate field survey.



Martenson & Eisele, Inc.

Planning - Surveying - Engineering - Architecture

www.martenson-eisele.com

info@martenson-eisele.com

pnac156930cp_03-08-04